

FrontPage 2003

Lesson 6 –Working with Themes



Themes

Themes provide a uniform set of design elements and color schemes. They are applied to an entire site or to individual pages. Individual formatted items take precedence over the theme's format.

Apply a Theme to an Entire Web Site

1. Open the **Practice** web site.
2. Open the **default.htm** page.
3. Click **Format > Theme**. The *theme task pane* opens.
4. **Scroll** through the list of themes, and locate the Nature theme.
5. Point to the **Nature thumbnail**.
6. Click the **theme arrow**.
7. Click **Apply as default theme**.
8. Click **Yes** at the caution message.
9. **Save** and **preview** the home page.

Apply a Theme to an Individual Page

1. Open the **favorite_things.htm** page.
2. If the theme task pane is not open, click **Format > Theme**.
3. **Scroll** through the list of themes, and locate the **Glacier** theme.
4. Point to the **Glacier thumbnail**.
5. Click the **theme arrow**.
6. Click **Apply to selected page**.
7. **Save** and **preview** the page.

Customize a Theme

A theme can be changed using different colors, graphics, and/or text. Save the theme with a new name after modifying it. It can then be applied to an entire web site or individual pages.

Display Customize Theme Window

1. Scroll to **recently used themes** in the task pane.
2. Point to the **Glacier** thumbnail.
3. Click the **theme arrow**.
4. Click **Customize**. The *Customize Theme* dialog box displays. See Figure 1.

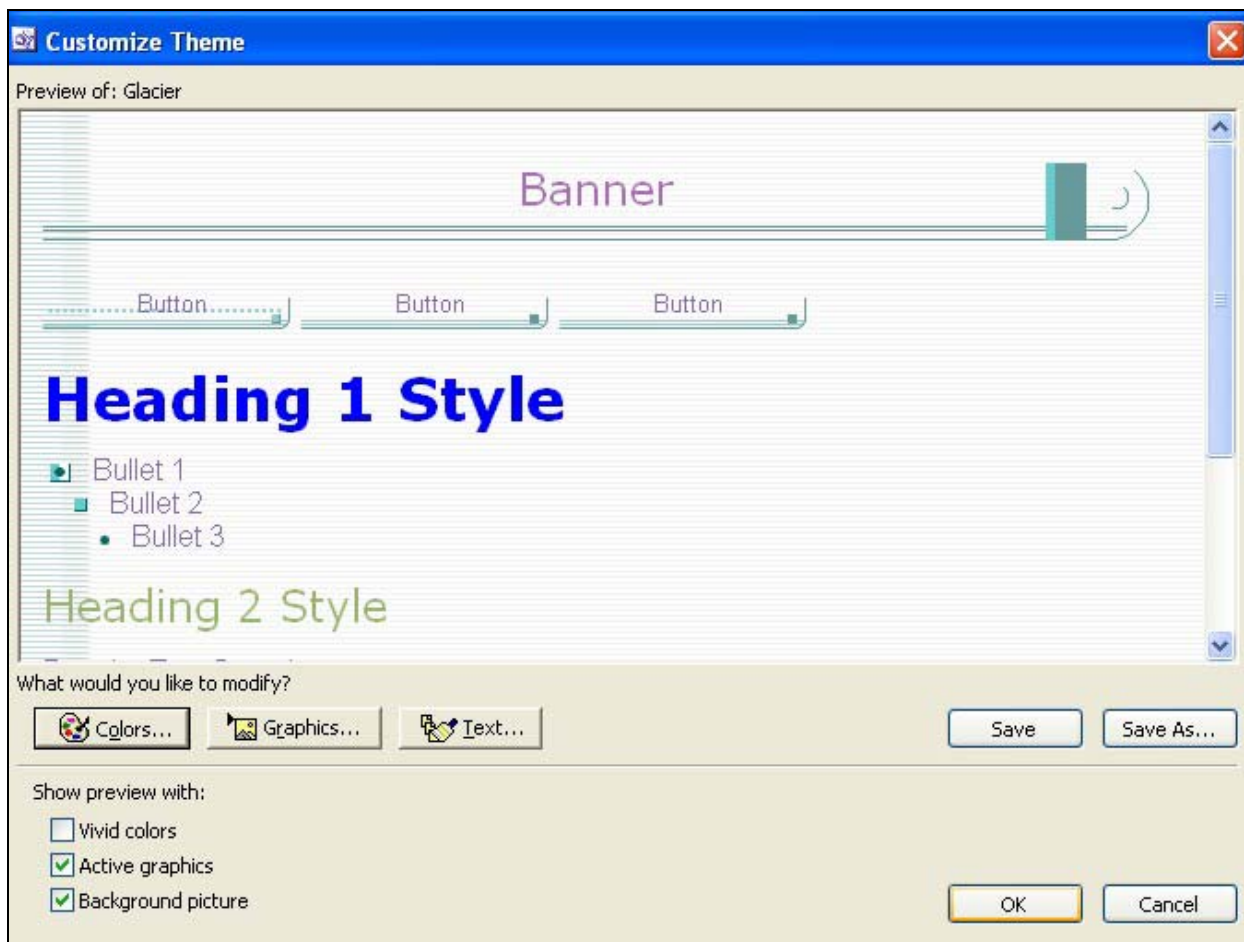


Figure 1. Customize theme

Colors

1. Click the **Colors** button. A list of color schemes displays.
2. Click the **Downtown** scheme. Look at the preview.
3. Click the **Checkers** scheme.
4. Click the **Color Wheel** tab.
5. Change the *brightness* by **sliding the tab** up and down.

6. Click and drag the **icon** on the *color wheel*.
7. Click the **Custom** tab. Colors of individual items can be changed.
8. Click the **item down arrow**.
9. Select **Heading 1**.
10. Click the **color down arrow**.
11. Select the **blue** color.
12. Click the **vivid colors** radio button.
13. Click **OK**.

Graphics

Individual graphic elements of the theme can be changed to other .jpg or .gif files.

1. Click the **Graphics** button.
2. Click the **item down arrow**.
3. Highlight **background picture**.
4. Click the **Browse** button.
5. Navigate to the CD-ROM.
6. Highlight the **peace.jpg** file.
7. Click **Open**.
8. Click **OK**.

Save and Apply the Customized Theme

1. Click **OK** at the *Customize Theme* window.
2. Click **Yes** for the **Save changes to Glacier theme** message.
3. Type **Favorite Things** as the theme title.
4. Locate the **Favorite Things theme**.
5. Apply the **Favorite Things theme** to the Favorite Things page.
6. **Save** and preview the page.

Remove a Theme from a Page

1. The favorite things page should be open.

2. Locate **no theme** in the theme task page.
3. Point to the **no theme thumbnail**.
4. Click the **theme arrow**.
5. Click **Apply to selected page**.
6. **Save** the page.

Remove a Theme from a Web Site

1. Locate **no theme** in the theme task page.
2. Point to the **no theme thumbnail**.
3. Click the **theme arrow**.
4. Click **Apply as default theme**.
5. Click **Yes** at the caution message.

Try It!

1. Select a theme and apply it to the entire site.
2. Select a different them and apply it to the feedback.htm page.
3. Remove the theme from the favorite_things. htm file.